

Item No.: 4C
Date of Meeting: 12/19/19

Resolution 2019-15-PT



Action requested



Approval of Resolution 2019-15-PT committing the Port of Tacoma to providing a contribution to the State Route 167 project of up to \$27 million in the form of cash and/or other in-kind contribution.



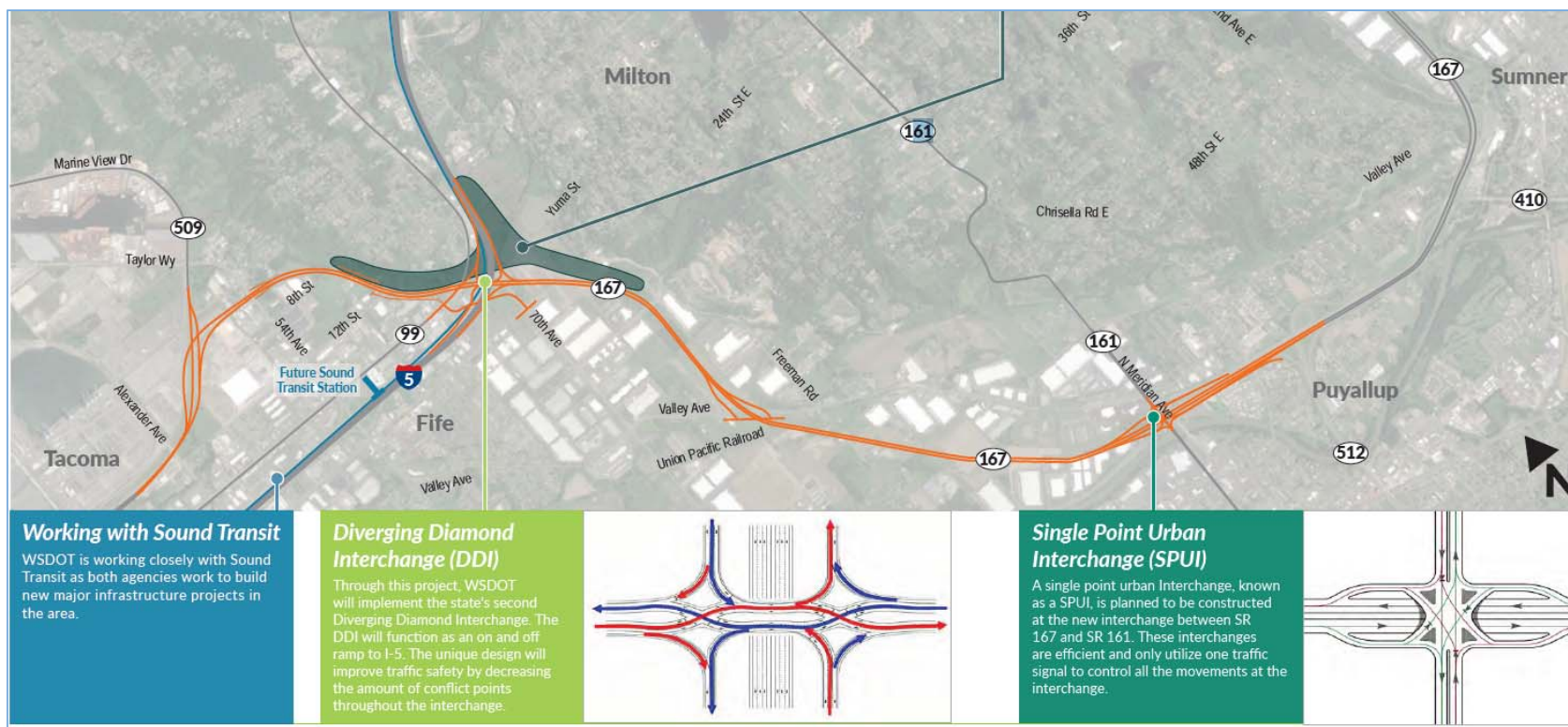
Background



Background



Background (continued)

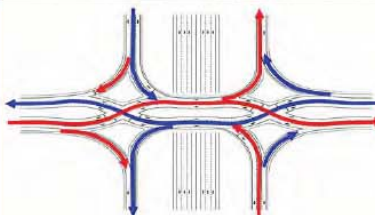


Working with Sound Transit

WSDOT is working closely with Sound Transit as both agencies work to build new major infrastructure projects in the area.

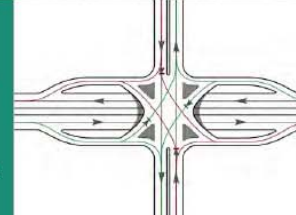
Diverging Diamond Interchange (DDI)

Through this project, WSDOT will implement the state's second Diverging Diamond Interchange. The DDI will function as an on and off ramp to I-5. The unique design will improve traffic safety by decreasing the amount of conflict points throughout the interchange.



Single Point Urban Interchange (SPUI)

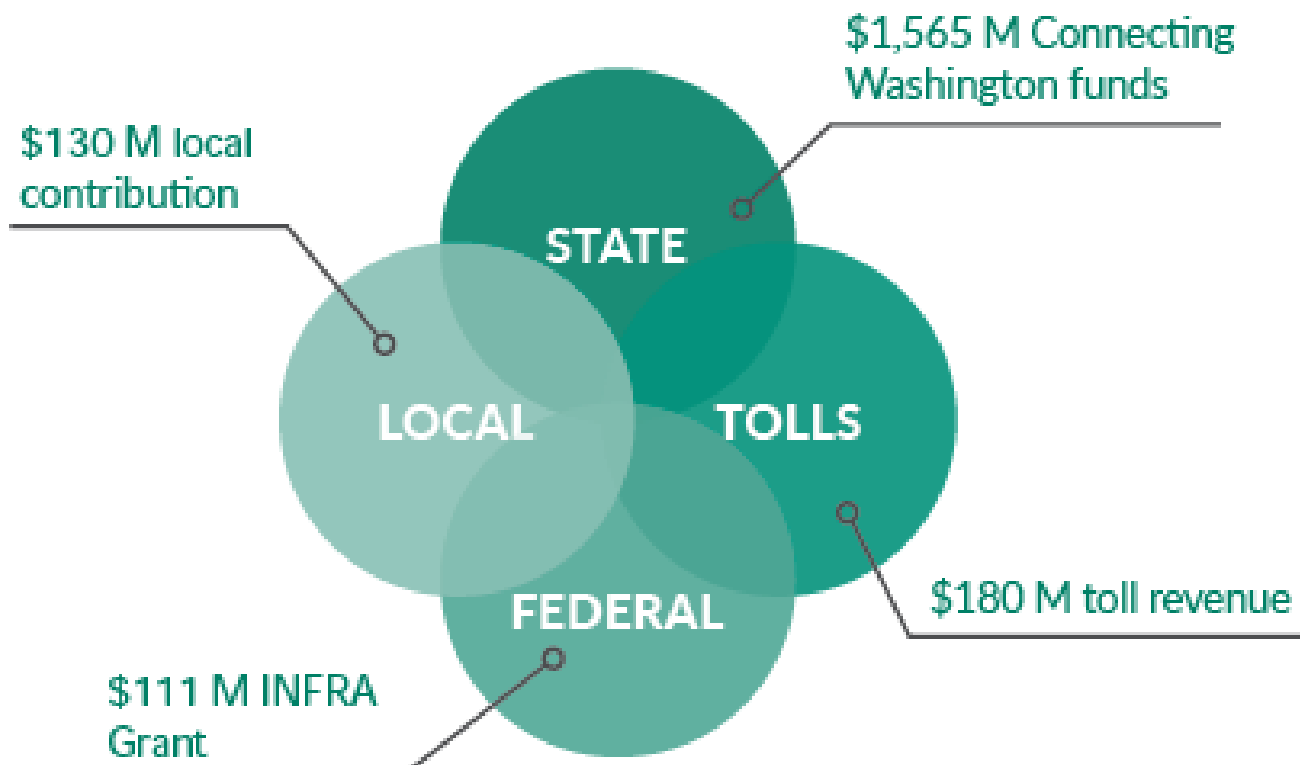
A single point urban Interchange, known as a SPUI, is planned to be constructed at the new interchange between SR 167 and SR 161. These interchanges are efficient and only utilize one traffic signal to control all the movements at the interchange.



Background (continued)



Gateway Funding



Background (continued)



Engrossed Senate Bill 5096 § 306(20)(b))

The secretary of transportation must develop a memorandum of understanding with local project stakeholders that identifies a schedule for stakeholders to provide local matching funds for the Puget Sound Gateway project. Criteria for eligibility of local match includes matching funds and equivalent in-kind contributions including, but not limited to, land donations. The memorandum of understanding must be finalized by July 1, 2018. The department must submit a copy of the memorandum of understanding to the transportation committees of the legislature and report regularly on the status.



Scope



- Commit to an additional \$27 million investment into SR 167;
- Specific details to be included in subsequent ILAs; and
- ILAs subject to commission approval.



Project schedule



Project Development	
NEPA re-evaluation	2017-2018
Interchange Justification Report	2017-2018
Traffic and revenue analysis for tolling	2017-2018
Legislative authorization for tolling	2019
Stage 1A (70 th Avenue bridge replacement)	
Design	2017-2019
Right-of-way	2017-2019
Construction	2019-2021
Stage 1B (I-5 to SR-509)	
Design	2017-2021
Right-of-way	2017-2021
Construction	2021-2025
Stage 2 (I-5 to SR-167)	
Design	2021-2023
Right-of-way	2017-2023
Construction	2023-2028



Financial summary



Item	Port Total Contribution	Expenditure to Date	Additional Future Cash Expenditures	Additional Future In-Kind Contribution	Total Future Expenditures
SR 167 Project	\$30 million	\$3 million	\$22 million	\$5 million	\$27 million
TOTAL	\$30 million	\$3 million	\$22 million	\$5 million	\$27 million



Alternatives considered



- No financial contribution.
- ILAs only without resolution.
- Preferred alternative: resolution + ILAs



Economic investment/job creation



- 44% truck trips bound to Kent/Puyallup valleys
- 15% travel time improvement
 - 14,000 hours
 - \$940 million
- \$10.1 billion in long-term payroll
- 2,437 construction jobs



Environmental impacts



- 26% reduction in air emissions
- 1,000 acres of contiguous habitat—70% increase in ecological services
- 50% reduction in flooding along Hylebos Creek



Next steps



Action requested



Approval of Resolution 2019-15-PT committing the Port of Tacoma to providing a contribution to the State Route 167 project of up to \$27 million in the form of cash and/or other in-kind contribution.

